

LOVE IT
BUY IT
HANG IT
* LIVING
WITH ART



DESIGN COUNCIL

Carolyn O'Neill, *Between the moon and New York City.*

Leading interior designers **Jane Stark** and **Brett Mickan** provide insight on how to approach an artwork for your home.

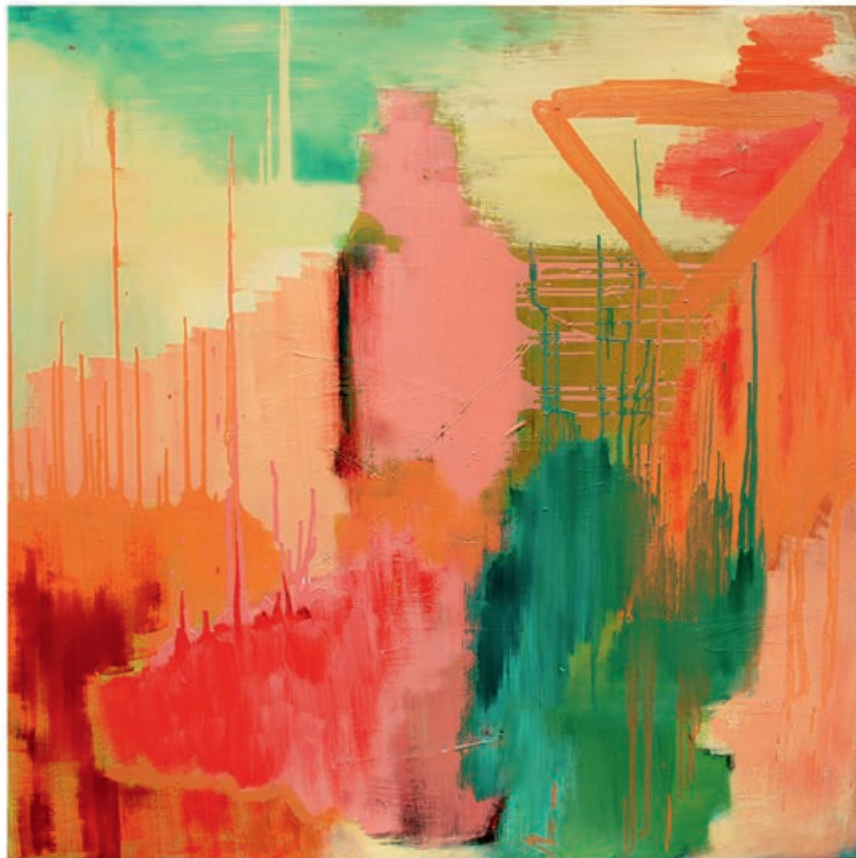


"I would love to see this piece on a wall that connects to a garden – it would draw the garden inside. It exudes vibrant energy and warmth and could even be in a winter room with a fire going. Moody blackened oak, aged Spanish or black-japaned furniture would sit beautifully with this piece. Aged dark oak floors and white walls would be the perfect foil, coupled with a pop of red elsewhere in the form of a red Eames Plywood lounge chair for a relaxed room or a dry burnished red velvet on an antique chair for something more serious!"

Jane Stark

*Want to see more
Carolyn O'Neill?*

info@carolynoneill.com.au
carolynoneill.com.au



"Love the title! Great pop of contemporary colours and really enjoying the coral tones. This painting would work beautifully with wood tones. Multilayered and graphic enough for the painting to have a real presence and the scale of it would really ground a space. It would work beautifully with bold block colours or black for larger furniture pieces."

Brett Mickan

Carolyn O'Neill,
*Between the moon and
New York City.*
Oil on canvas board,
120 x 120cm.

Courtesy the artist.